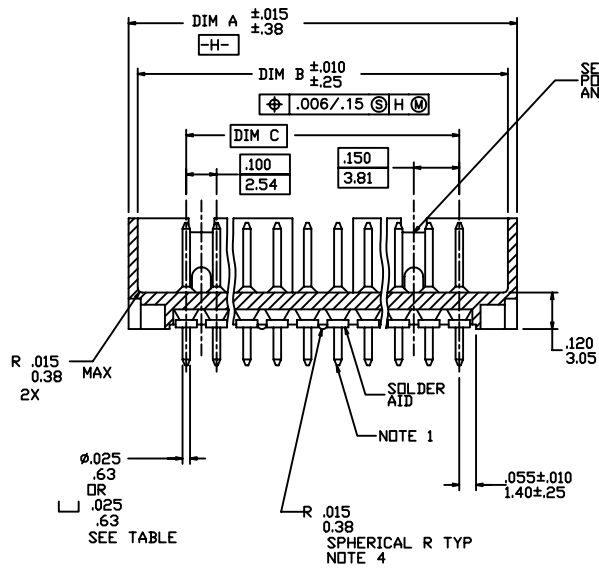
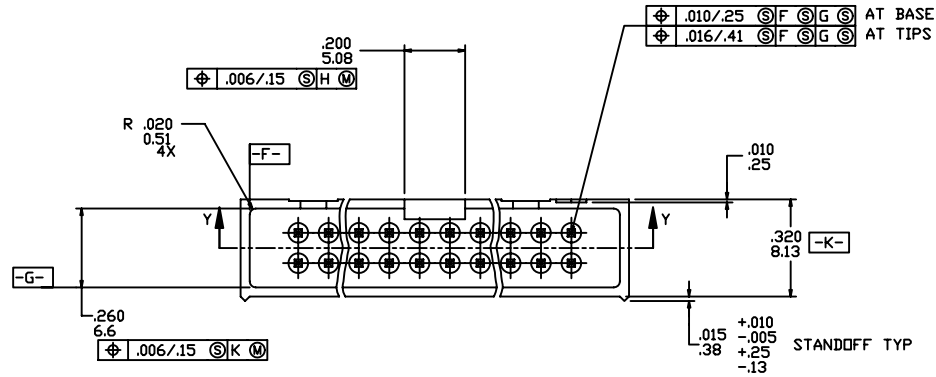


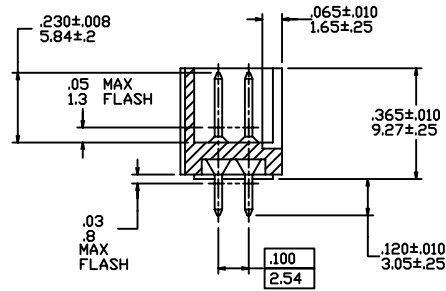
Tous droits strictement reserves. Reproduction ou communication a des tiers interdite sous quelque forme que ce soit sans autorisation ecrite du proprietaire. Propriete de c FCI. Droits de reproduction FCI.



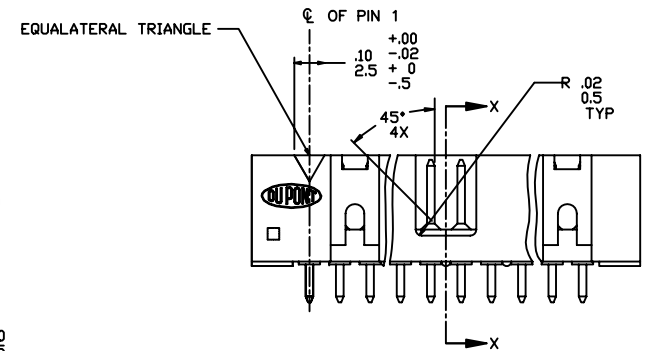
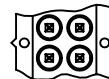
All rights strictly reserved. Reproduction or issue to third parties in any form whatever is not permitted without written authority from the proprietor. Property of FCI. Copyright FCI.



SEE SHEET 2 AND TABLES FOR POL FEATURE ARRANGEMENT AND STYLE.



SECTION X-X

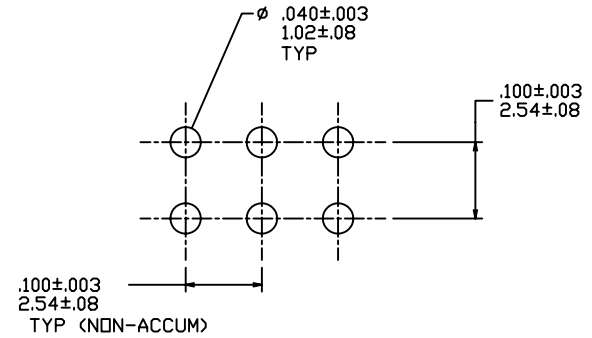
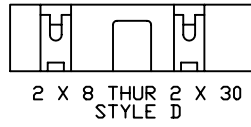
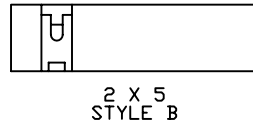
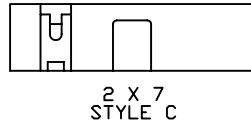
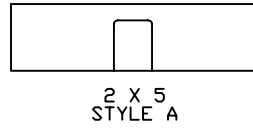


mat'l. code		tolerances unless otherwise specified		CUSTOMER COPY		FCI www.fciconnect.com	
ltr	ecn no	dr	date	linear	.X ± 0.3	projection	title DUFLD 4 WALL SLIMLINE HEADER
C	N05-0151	ZC	6/10/05		.XX ± 0.13		
D	N07-0151	WG	8/01/07	angles	.XXX ± 0.05	INCH/MM	product family QUICKIE
					±	scale 1:1	code
				dr	J.W. BAIR	8/1/90	size
				enrg	M.SMYK	8/1/90	dwg no
				chr	M.SMYK	8/1/90	78280
				appd	M.SMYK	8/1/90	sheet 1 of 3
sheet index	revision sheet						

Tous droits strictement réservés. Reproduction ou communication à des tiers interdite sous quelque forme que ce soit sans autorisation écrite du propriétaire. Propriété de c FCI. Droits de reproduction FCI.



All rights strictly reserved. Reproduction or issue to third parties in any form whatever is not permitted without written authority from the proprietor. Property of FCI. Copyright FCI.



RECOMMENDED HOLE PATTERN
SCALE 10/1

NOTES

- ① SAME PIN POSITION TOLERANCE APPLIES TO BOTH ENDS OF EACH TERMINAL.
- ② MOLDING MAT'L: 30% GLASS-FILLED POLYESTER, FLAME RETARDANT PER UL 94 VE-0, COLOR-BLUE.
3. 1° MAX DRAFT PERMISSIBLE ON ALL SURFACES.
4. 4 LBS/1.8 KG. MIN. TERMINAL PULL-OUT FORCE.
5. TERMINAL MATERIAL: PHOSPHORUS BRONZE.
6. SOLDER AID COMPOSITION 60/40 WITH RMA FLUX.
7. CONNECTORS WITH BOARD RETENTION HAVE A 15 LBS/6.8 KG MAX. INSERTION FORCE AND 5 LB/2.26 KG MIN. RETENTION FORCE USING .062/1.57 THICK CIRCUIT BOARD AND RECOMMENDED HOLE PATTERN.
8. THE HOUSING OF XXXX-XYLF WILL WITHSTAND EXPOSURE TO 260°C PEAK TEMPERATURE FOR 10 SECONDS IN A WAVE SOLDER PROCESS.
9. 78280-***LF IS JUST A LEAD FREE PRODUCT.
10. PLATING OPTION: MAYBE EITHER GOLD OR GXT PLATING AT MANUFACTURER'S OPTION.

KEY FOR PLATING AND TAIL TYPE					
X	TERMINAL PLATING NOTE 10	OPTIONS	SOLDER AID	RETENTION NOTE 7	
-0XX(LF)	30µ/.76 µ Au OVER 50µ/1.27 µ Ni	NONE	YES	YES	
-1XX(LF)	30µ/.76 µ GXT	NONE	YES	YES	
-2XX(LF)	30µ/.76 µ Au OVER 50µ/1.27 µ Ni	END LATCH	YES	YES	
-3XX(LF)	30µ/.76 µ GXT	END LATCH	YES	YES	
-4XX(LF)	30µ/.76 µ Au OVER 50µ/1.27 µ Ni	NONE	NO	NO	
-5XX(LF)	30µ/.76 µ GXT	NONE	NO	NO	
-6XX(LF)	30µ/.76 µ Au OVER 50µ/1.27 µ Ni	NONE	NO	YES	
-7XX(LF)	30µ/.76 µ GXT	NONE	YES	NO	
-8XX(LF)	30µ/.76 µ Au OVER 50µ/1.27 µ Ni	NONE	YES	NO	

mat'l. code		tolerances unless otherwise specified		CUSTOMER COPY		www.fciconnect.com	
ltr	ecn no	dr	date	linear	.X ± 0.3	projection	title
D							
				.XXX ± 0.05	INCH/MM	product family QUICKIE	
				angles			±
				dr	J.W. BAIR 8/1/90	← →	dwg no
				engr	M.SMYK 8/1/90		
				chr	M.SMYK 8/1/90	1:1	sheet
				appd	M.SMYK 8/1/90		
sheet	revision						
index	sheet						

Tous droits strictement réservés. Reproduction ou communication à des tiers interdite sous quelque forme que ce soit sans autorisation écrite du propriétaire. Propriété de c FCI. Droits de reproduction FCI.



All rights strictly reserved. Reproduction or issue to third parties in any form whatever is not permitted without written authority from the proprietor. Property of FCI. Copyright FCI.

SIZE	DIM A	DIM B	DIM C	STYLE
78280-X10(LF)	2X5	.78/19.81	.72/18.29	A
-X14(LF)	2X7	.98/24.89	.92/23.37	C
-X16(LF)	2X8	1.08/27.43	1.02/25.91	D
-X20(LF)	2X10	1.28/32.51	1.22/30.99	
-X24(LF)	2X12	1.48/37.59	1.42/36.07	
-X26(LF)	2X13	1.58/40.13	1.52/38.61	
-X30(LF)	2X15	1.78/45.21	1.72/43.69	
-X34(LF)	2X17	1.98/50.29	1.92/48.77	
-X40(LF)	2X20	2.28/57.91	2.22/56.39	
-X44(LF)	2X22	2.48/63.00	2.42/61.47	
-X50(LF)	2X25	2.78/70.61	2.72/69.09	
-X60(LF)	2X30	3.28/83.31	3.22/81.79	
-X64(LF)	2X32	3.48/88.39	3.42/86.87	D
78280-X02(LF)	2X5	.78/19.81	.72/18.29	B

mat'l. code		tolerances unless otherwise specified		CUSTOMER COPY		FCI www.fciconnect.com	
ltr	ecn no	dr	date	linear	.X ± 0.3	projection	title
D					.XX ± 0.13	⊕	DUFLD 4 WALL
				angles	.XXX ± 0.05		SLIMLINE HEADER
					±	INCH/MM	product family QUICKIE
				dr	J.W. BAIR 8/1/90	← →	code
				enrg	M.SMYK 8/1/90	scale 1:1	size
				chr	M.SMYK 8/1/90	A3	78280
				appd	M.SMYK 8/1/90		sheet 3 of 3
sheet	revision						
Index	sheet						